



Stevens I.D.SYSTEMS™  
800.350.3270  
www.IDSystemsStorage.com



(images depict typical Base-Hutch assemblies)

## HUTCH CABINETS

### STEP-BY-STEP INSTALLATION

#### ATTENTION

Please unpack and assemble in an area away from children's activities. Remove all tools and excess materials from work area after assembly of unit is complete. Dispose of pallet and packaging materials in an environmentally friendly manner. If any parts are missing or damaged, please call Stevens for immediate parts replacement (1-800-350-3270). When ordering parts, give the Model Number and Color of the unit.

#### NOTE:

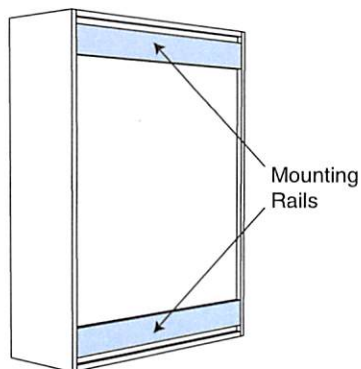
*Pulls are preinstalled on the inside of fronts and must be reinstalled on the outside. However, they are shown in their final mounting position on installation drawings.*

#### NOTE:

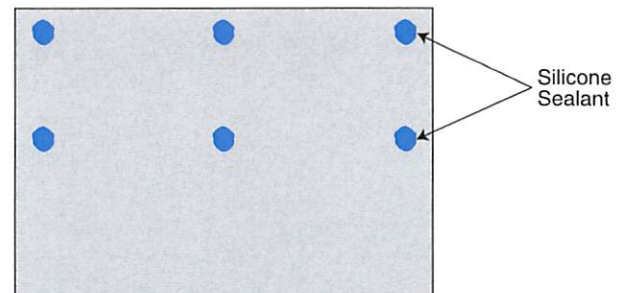
*Hutch cabinets are designed for stacking on Base cabinets having a countertop.*

*Hutch cabinet assembly instructions assume that the Base cabinet and countertop have already been installed.*

- 1 Note that there are (2) Mounting Rails on the back side of the Hutch cabinet.

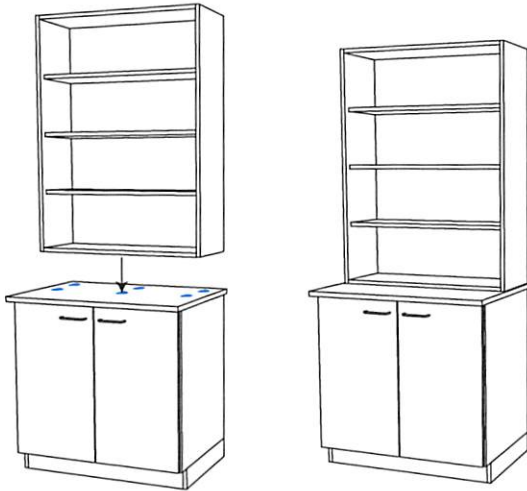


- 2 Apply silicone sealant in at least six (6) locations where the Hutch cabinet will contact the Countertop.

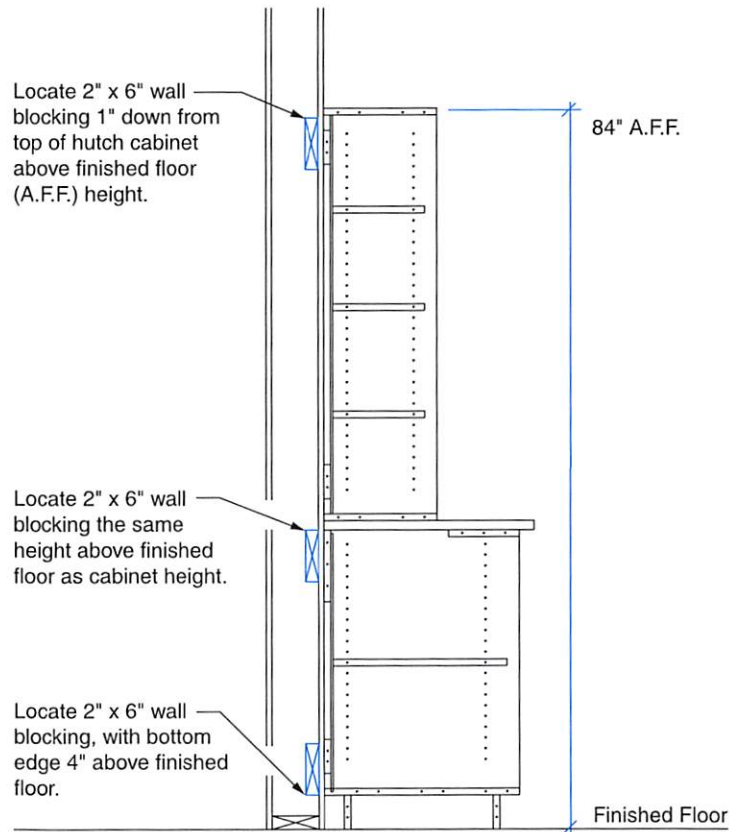


## STEP-BY-STEP INSTALLATION

- 3** Place Hutch cabinet onto Countertop, centering side-to-side and positioning firmly against the building structure.



- 4** Note that internal wall blocking is required for attachment of Hutch cabinets to wood and metal stud walls, as illustrated below.



**CAUTION!**  
*Never rely on simply anchoring into gypsum, plaster or thin paneling wall. Always fasten into hard areas of masonry walls, studs and internal wall blocking.*

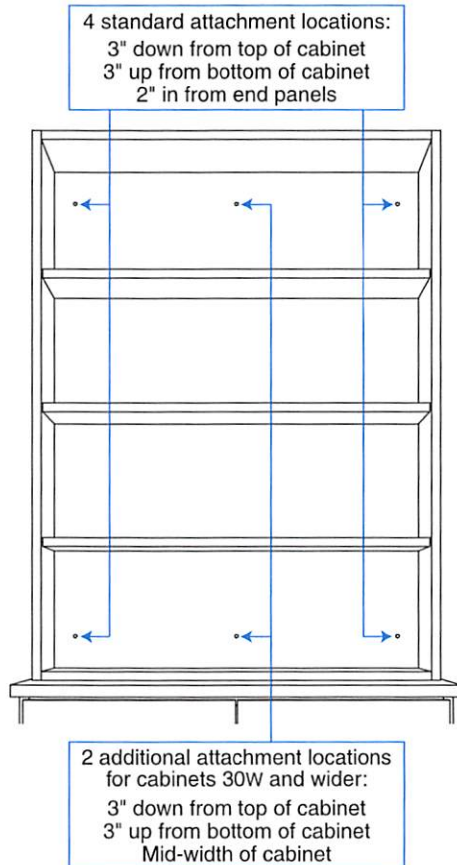
**NOTE:**  
 Block or concrete walls require no blocking. Attachment to wall with proper concrete or masonry anchors required.

# HUTCH CABINETS



## STEP-BY-STEP INSTALLATION

- 5 Note that there is a minimum of four (4) standard locations for attachment of the Hutch cabinet to the building structure, as illustrated below. Two (2) additional mid-point locations are recommended for cabinets that are 30" wide and wider. Anchoring devices (*not provided*) must pass through the Mounting Rails on the back of the cabinet.



- 6 Securely attach Hutch cabinet to building structure through both Mounting Rails, in the locations illustrated in Step #5.

*Fastening anchors (not provided) to be of type suitable for wall structures such as block and concrete, wood stud walls and metal stud walls. Do not attach directly to drywall or thin paneling.*

### CAUTION!

*Never rely on simply anchoring into gypsum, plaster or thin paneling wall. Always fasten into hard areas of masonry walls, studs and internal wall blocking.*

### IMPORTANT!

*Assembly must be securely attached to building structure with anchoring devices of appropriate type, size and quantity in accordance with applicable codes and accepted installation practices.*